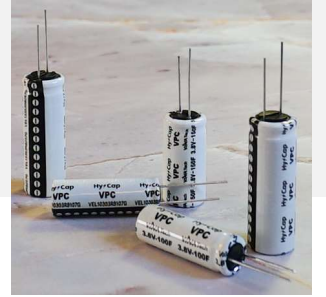


3.8V 250F (1335)

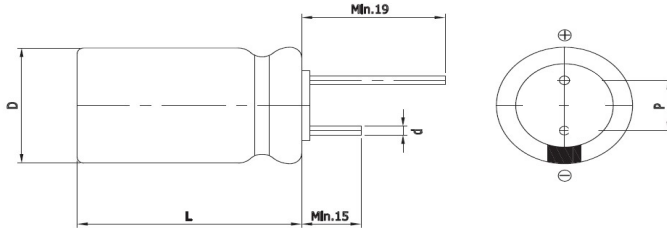
Features

VPC (Vina Pulse Capacitor)

- Low Self Discharge
- Wide Temperature Range
- High Operating Voltage
- High Capacitance



Drawing



Size	1335
D (Φ)	12.5 +1.0 Max
L (mm)	35.0 ±1.5
d (Φ)	0.8 ±0.1
P (mm)	5.0 ±0.5

Specification

Items	Characteristics
Rated Voltage (V _R)	3.8V
Operating voltage	3.8V ~ 2.5V
Surge voltage	4.0V
Operating temperature	-25°C to +70°C
Capacitance Tolerance	-10% +30%
High Temperature Load Life	After 1,000 hours at V _R loaded at 70°C, capacitor shall meet the following limits
	Capacitance change ≤ 30% of initial value
	ESR change ≤ 200% of initial spec. value
Projected cycle life	20,000 Cycle (100% DoD, at 25°C, cut-off voltage: 2.5V)
	Capacitance change ≤ 30% of initial value
	ESR change ≤ 200% of initial spec. value
Shelf life	3 Years (No electrical charge, Temperature below 25°C)
	Capacitance change ≤ 10% of initial value
	ESR change ≤ 100% of initial spec. value

Part Number	Capacitance (F) #1	ESR (mΩ)		Leakage Current (μA)	Rated Current (A)	Pulse Current (A) #2	Max Charge Current (A)	Max Charge Voltage (V) #3	Weight (g)
		AC	DC						
VEL13353R8257G	250 @25°C	50 @25°C, 1KHz	100 @25°C	5 @25°C, 72hr	0.75 @25°C	5.0 @25°C	3.0 @25°C	3.85 @25°C	8.2±0.3

#1 : Reference IEC62813 4.2

#2 : 1sec. Discharge to 3.2V

#3 : If the charging voltage is continuously used at 3.85V, the lifespan is reduced by 10%

WARNING : precautions must be taken to ensure that device leads are not shorted

Version 1.2 2021. 11. 13