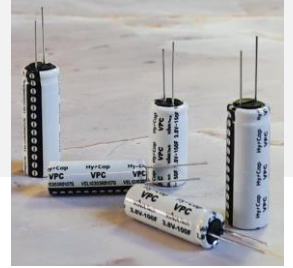


# 3.8V 150F (1325)

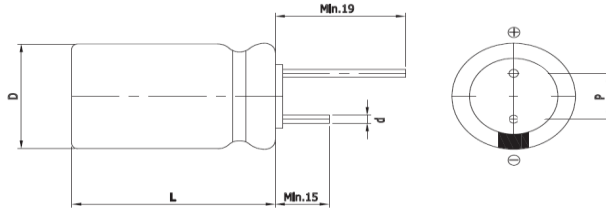
## Features

### VPC (Vina Pulse Capacitor)

- Low Self Discharge
- Wide Temperature Range
- High Operating Voltage
- High Capacitance



## Drawing



Size	1325
D (Φ)	12.5 +1.0 Max
L (mm)	25.0 ±1.5
d (Φ)	0.8 ±0.1
P (mm)	5.0 ±0.5

## Specification

Items	Characteristics	
Rated Voltage (V <sub>R</sub> )	3.8V	
Operating voltage	3.8V ~ 2.5V	
Surge voltage	4.0V	
Operating temperature	-25°C to +70°C	
Capacitance Tolerance	-10% +30%	
High Temperature Load Life	After 1,000 hours at V <sub>R</sub> loaded at 70°C, capacitor shall meet the following limits	
	Capacitance change	≤ 30% of initial value
	ESR change	≤ 200% of initial spec. value
Projected cycle life	20,000 Cycle (100% DoD, at 25°C, cut-off voltage: 2.5V)	
	Capacitance change	≤ 30% of initial value
	ESR change	≤ 200% of initial spec. value
Shelf life	3 Years (No electrical charge, Temperature below 25°C)	
	Capacitance change	≤ 10% of initial value
	ESR change	≤ 100% of initial spec. value

Part Number	Capacitance (F) #1	ESR (mΩ)		Leakage Current (μA)	Rated Current (A)	Pulse Discharge Current (A) #2	Pulse Charge Current (A)	Max Charge Voltage (V) #3	Weight (g)
		AC	DC						
VEL13253R8157G	150 @25°C	70 @25°C, 1KHz	140 @25°C	7 @25°C, 72hr	0.5 @25°C	3.0 @25°C	5.0 @25°C	3.85 @25°C	6.2±0.3

#1 : Reference IEC62813 4.2

#2 : 1sec. Discharge to 3.2V

#3 : If the charging voltage is continuously used at 3.85V, the lifespan is reduced by 10%

**WARNING : precautions must be taken to ensure that device leads are not shorted**