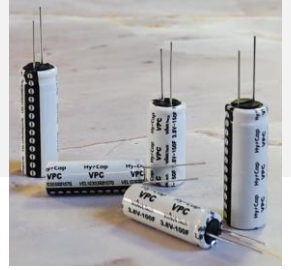


3.8V 100F (1030)

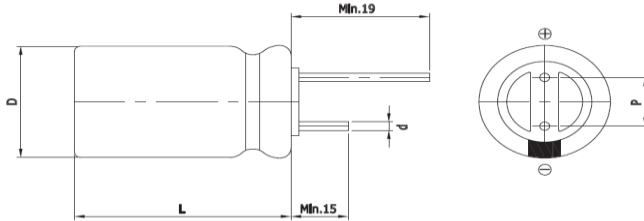
Features

VPC (Vina Pulse Capacitor)

- Low Self Discharge
- Wide Temperature Range
- High Operating Voltage
- High Capacitance



Drawing



Size	1030
D (Φ)	10.0 +1.0 Max
L (mm)	30.0 ±1.5
d (Φ)	0.8 ±0.1
P (mm)	5.0 ±0.5

Specification

Items	Characteristics	
Rated Voltage (V _R)	3.8V	
Operating voltage	3.8V ~ 2.5V	
Surge voltage	4.0V	
Operating temperature	-25°C to +70°C	
Capacitance Tolerance	-10% +30%	
High Temperature Load Life	After 1,000 hours at V _R loaded at 70°C, capacitor shall meet the following limits	
	Capacitance change	≤ 30% of initial value
	ESR change	≤ 200% of initial spec. value
Projected cycle life	20,000 Cycle (100% DoD, at 25°C, cut-off voltage: 2.5V, C/D current: 0.72A)	
	Capacitance change	≤ 30% of initial value
	ESR change	≤ 200% of initial spec. value
Shelf life	3 Years (No electrical charge, Temperature below 25°C)	
	Capacitance change	≤ 10% of initial value
	ESR change	≤ 100% of initial spec. value

Part Number	Capacitance (F) #1	Capacity (mAh)	ESR (mΩ)		Leakage Current (μA)	Rated Current (A)	Pulse Discharge Current (A) #2	Pulse Charge Current (A)	Max Charge Voltage (V) #3	Weight (g)
			AC	DC						
VEL10303R8107G	100 @25°C	36 @25°C	100 @25°C, 1KHz	200 @25°C	5 @25°C, 72hr	0.4 @25°C	2.0 @25°C	3.0 @25°C	3.85 @25°C	4.4±0.3

#1 : Reference IEC62813 4.2

#2 : 1sec. Discharge to 3.2V

#3 : If the charging voltage is continuously used at 3.85V, the lifespan is reduced by 10%

WARNING : precautions must be taken to ensure that device leads are not shorted