

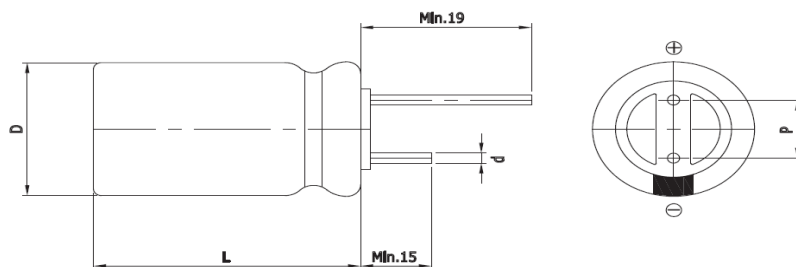
Features

EDLC (Electric Double Layer Capacitor)

- High Power Density (Low ESR)
- Over 500,000 cycle life (semi-permanent)
- Short-term Peak Power assist applications
- RoHS compliant



Drawing



D (Φ)	18.0 +1.0Max
L (mm)	40.0 ±1.5
d (Φ)	0.8 ±0.1
P (mm)	7.5 ±0.5

Specification

Item	Characteristics	
Product series	EDLC	
Rated Voltage (V _R)	2.7V	
Operating Temperature	-40 ~ +65°C	
Capacitance Tolerance	-10 ~ +30%	
High Temperature Load Life	After 1,000 hours at V _R loaded under +65°C, capacitors meet the following criteria.	
	Capacitance Change	≤ 30% of initial value
	ESR	≤ 2 times of specified value
	85°C Temperature	Max. 2.3V
Cycle Life Characteristics	Cycle	Over 500,000
	ΔC	≤ 30% of initial value
	ESR	≤ 2 times of specified value
	Method	Cycle of Charge/discharge from V _R to 1/2V _R
Shelf Life	2 Years No Electrical Charge, Temperature below 70°C (ΔC : ≤ 10% of initial value / ΔESR : ≤ 50% of specified value)	

Part Number	Rated Voltage (V)	Capacitance (F)	ESR (mΩ)		Max. Current (A)	Leakage Current (mA, 72hr)	Size (mm)
			AC(1kHz)	DC			D × L
VEC 2R7 506 QG	2.7	50	11	17	36.5	0.100	18 X40

* Max. Current : 1 sec. discharge to 1/2V_R

Version 9.2 2019.02.21.